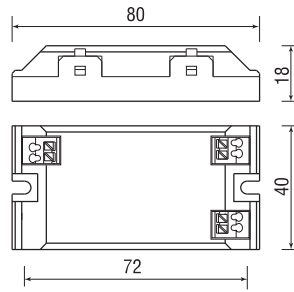
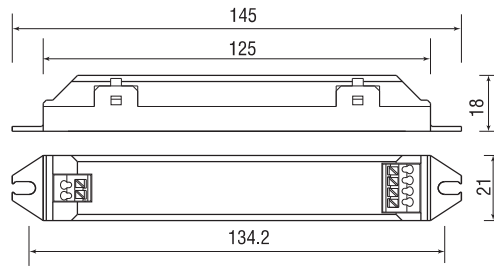




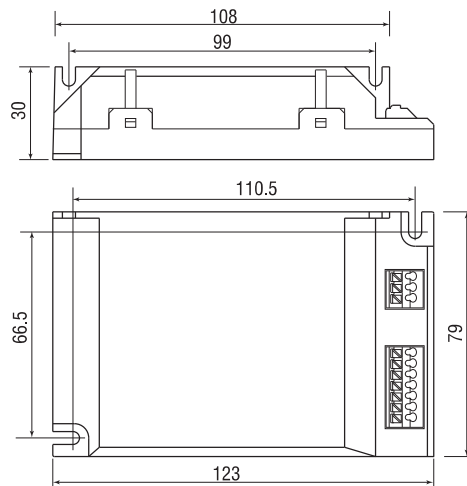
K1



K2

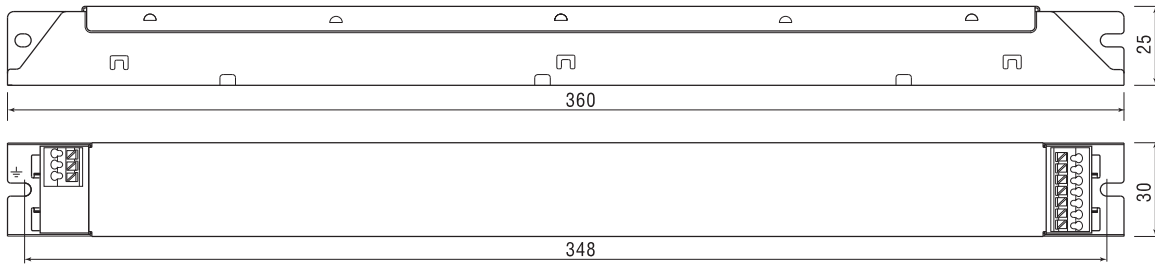


K4

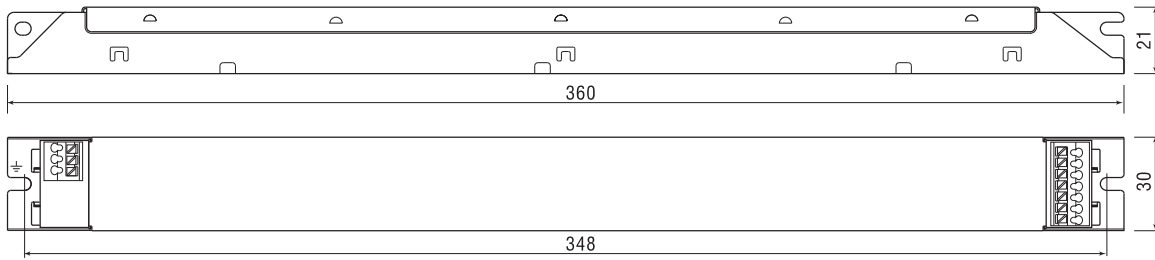




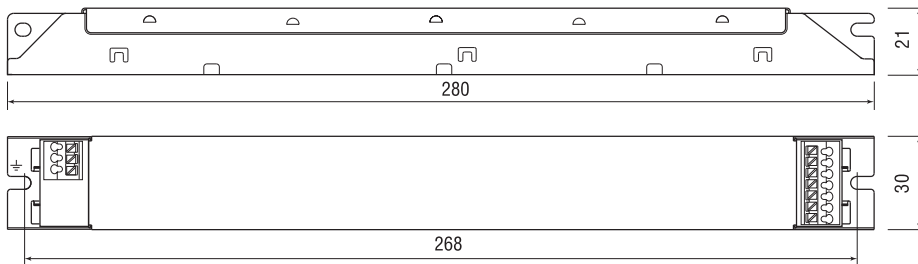
K5



K6



K10



**Professional** Built-in Electronic Ballasts for T8, T5 lamps

- Supply Voltage 220-240V 50/60Hz + - 10%
- ASIC driven, Active PFC (Power Factor Correction) for ballasts over 25W
- Programmed warm start within 1.2s
- Constant Power Consumption
- End of life Protection and Short Circuit Protection
- Automatic restart after lamp replacement
- Cut-off technique for some of T5 ballasts
- For luminaries of protection class I and II
- Degree of protection IP20
- RoHS compliant

- Complied with applicable standards for safety, performance and EMC

EMC	Emission	EN55015, EN61000-3-2 EN61000-3-3
	Immunity	EN61547, EN61000-4-11 EN61000-4-2-EN61000-4-6
Safety		EN61347-1, EN61347-2-3
Performance		EN60929



Lamp Type	Watt	Base	Ballast Type	EEL	Wiring Diagram	Ta °C	Tc °C	Casing	LxWxH mm	Lamp Wattage W	System Wattage at 230V/50Hz W	Current A	Certification
-----------	------	------	--------------	-----	----------------	-------	-------	--------	----------	----------------	-------------------------------	-----------	---------------

**Professional for T5**

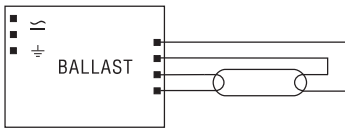
T5 HE	14	G5	EBT 135.201	A2	1	-20 to 55	75	K10	280x30x21	14.0	17.0	0.08	CE
T5 HE	2x14	G5	EBT 235.201	A2	6	-20 to 55	80	K6	360x30x21	2x14.0	33.0	0.15	CE
T5 HE	3x14	G5	EBT 414.201	A2	8	-20 to 55	80	K6	360x30x21	3x14.0	49.0	0.22	CE
T5 HE	4x14	G5	EBT 414.201	A2	5	-20 to 55	80	K6	360x30x21	4x14.0	65.0	0.29	CE
T5 HE	21	G5	EBT 135.201	A2	1	-20 to 55	75	K10	280x30x21	21.0	24.0	0.11	CE
T5 HE	2x21	G5	EBT 235.201	A2	6	-20 to 55	80	K6	360x30x21	2x21.0	47.0	0.23	CE
T5 HE	28	G5	EBT 135.201	A2	1	-20 to 55	75	K10	280x30x21	28.0	32.0	0.14	CE
T5 HE	2x28	G5	EBT 235.201	A2	6	-20 to 55	80	K6	360x30x21	2x28.0	63	0.28	CE
T5 HE	35	G5	EBT 135.201	A3	1	-20 to 55	75	K10	280x30x21	35.0	39.5	0.18	CE
T5 HE	2x35	G5	EBT 235.201	A2	6	-20 to 55	80	K6	360x30x21	2x35	78.0	0.35	CE
T5 HO	24	G5	EBT 140.201	A2	1	-20 to 55	80	K10	280x30x21	24.0	28.0	0.14	CE
T5 HO	2x24	G5	EBT 240.201	A2	2	-20 to 55	80	K6	360x30x21	2x24.0	53.5	0.24	CE
T5 HO	3x24	G5	EBT 424.201	A2	8	-20 to 55	80	K6	360x30x21	3x24.0	80.0	0.35	CE
T5 HO	4x24	G5	EBT 424.201	A2	5	-20 to 55	80	K6	360x30x21	4x24.0	104.0	0.46	CE
T5 HO	39	G5	EBT 140.201	A2	1	-20 to 55	80	K10	280x30x21	39.0	43.0	0.21	CE
T5 HO	2x39	G5	EBT 240.201	A2	2	-20 to 55	80	K6	360x30x21	2x39.0	85.0	0.37	CE
T5 HO	54	G5	EBT 154.201	A2	1	-15 to 55	80	K10	280x30x21	54.0	60.0	0.26	CE
T5 HO	2x54	G5	EBT 254.201	A2	2	-15 to 55	80	K6	360x30x21	2x54.0	119.0	0.52	CE
T5 HO	49	G5	EBT 149.201	A2	1	-15 to 55	80	K10	280x30x21	49.0	54.5	0.24	CE
T5 HO	2x49	G5	EBT 249.201	A2	6	-15 to 55	80	K6	360x30x21	2x49.0	110.0	0.48	CE
T5 HO	80	G5	EBT 180.201	A2	1	-20 to 55	80	K10	280x30x21	80.0	88.0	0.40	CE
T5 HO	2x80	G5	EBT 280.201	A2	2	-15 to 55	80	K6	360x30x21	2x80.0	174.0	0.77	D'E

**Professional for T-R5**

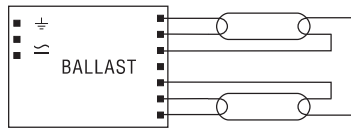
T-R5	2x22	2GX13	EBC 242.201	A2	2	-15 to 55	80	K4	123x79x30	2x22.0	49.0	0.22	D'E
T-R5	40	2GX13	EBC 242.201	A3	7	-15 to 55	80	K4	123x79x30	40.0	45.0	0.20	D'E
T-R5	2x40	2GX13	EBC 242.201	A2	2	-15 to 55	80	K4	123x79x30	2x40.0	88.0	0.39	D'E
T-R5	22+40	2GX13	EBC 242.201	A2	2	-15 to 55	80	K4	123x79x30	22.0+40.0	69.5	0.31	D'E

Wiring Diagram

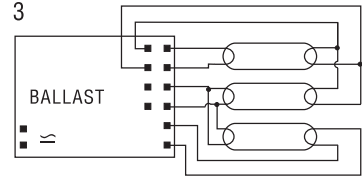
1



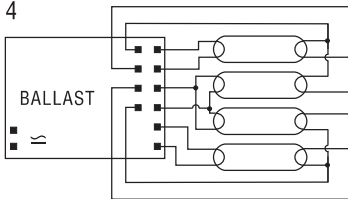
2



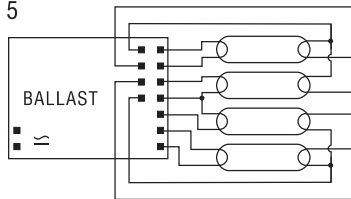
3



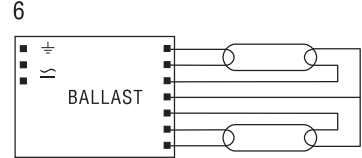
4



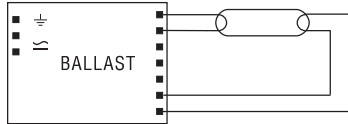
5



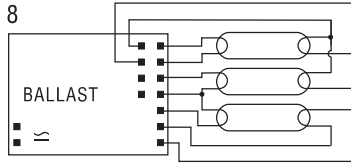
6



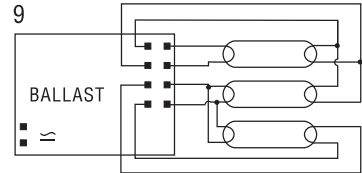
7



8



9



10

